

ADONIS 6.0

GERGEN SKIP LOADER

THE NEW GENERATION



GERGEN 
Kipper- und Fahrzeugbau

GERGEN

WITH A FIRM EYE ON THE FUTURE FOR GENERATIONS

For more than 80 years we have been developing transport and disposal solutions for your success! The skip loaders from Gergen set the standards. All the outstanding developments of the last decades have been created at our site in Saarland, Germany.



Leo Gergen
1907-1980



Hans-Georg, Ottmar and
Engelbert Gergen
1967-2013



Arndt Kreutzer
Executive Partner
Seit 2013

CHALLENGE US

WE SHOW WHAT WE CAN DO

WE LOVE PROGRESS

GERGEN

Kipper- und Fahrzeugbau

IN THE 50s....

...GERGEN built its first skip loader.

GERGEN skip loaders arouse emotions through modern design in a perfect shape of the basic structure, with open main cylinders and the trend-setting, patented arm construction: **the gooseneck.**

GERGEN builds skip loaders of the best quality, constantly adapted to the new market requirements and equipped with outstanding details.

This makes GERGEN skip loaders unique.

THEN AS NOW!

For years, it has been our ambition to incorporate your practical experience into our constructions. This work, together with you and our competence team in design and production, results in implements "from practice - for practice".

GERGEN 
Kipper- und Fahrzeugbau

ADONIS 6.0

THE NEW GENERATION

TECHNICAL PERFECTION
IN THE MOST MODERN
DESIGN.
FROM THE 3.5 TON
CITY TRUCK UP TO THE HEAVY
4-AXLE TRUCK.



GERGEN 
Kipper- und Fahrzeugbau

GERGEN SKIP LOADER

UNLIMITED POSSIBILITIES

No matter whether the heaviest use is required or whether you want to go "high up" - we have the "tailor-made suit" for you in our skip loader! Due to the unique cylinder and basic construction, the Adonis convinces with:

- max. loading length
- max. inside width
- max. loading height due to low body height



INNOVATIONS...



- 1. OPTIMUM CORROSION PROTECTION DUE TO HOT-DIP ZINC COATING.** Telescopes, support legs, locking mechanism, guide rails, fixing- and attachment parts are already hot-dip zinc coated in the basic version!
- 2. OPTIONAL: HANDHOLDS ON BOTH SIDES** for access from the rear.
- 3. THE GOOSENECK-CONSTRUCTION.** The main arms allow the containers to be parked easily at an angle.
- 4. THE MAIN ARMS ARE FIRMLY WELDED TO THE ROTARY SHAFT.** The rotary shaft, in turn, is housed in large-volume half-shells with greasable brass sleeves.
- 5. WEIGHT REDUCTION AND IMPROVEMENT OF CORROSION PROTECTION DUE TO THE USE OF ALUMINIUM.** Lighting carrier, rear cover plates, cylinder protection and maintenance cover are already included in the basic equipment



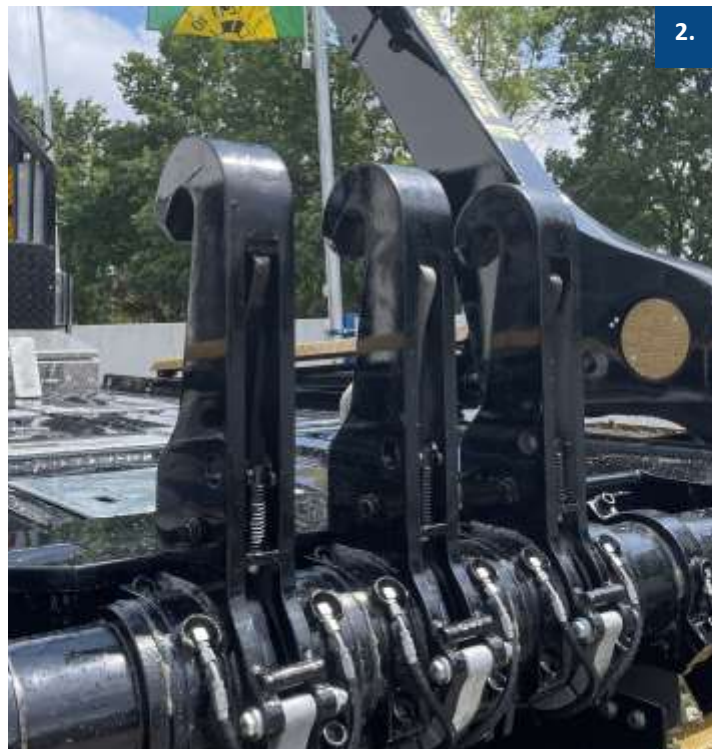
...FOR YOUR PROFITABLE USE



TYPICALLY GERGEN...



1.



2.

1. Almost **no hoses** and just a minimum of screw connections. This reduces leaks to a minimum.
2. **OPTIONAL 3-FOLD TIPPING-HOOK-SYSTEM** the middle hook can be controlled separately. These are mounted with 2 half shells on the rotary shaft. This makes it possible to quickly expand from the 1- to the 3-hook system.

MANY USEFUL DETAILS FOR ACCURATE AND FAST WORK



3. **OPTIONAL: Hot-dip zinc coating** of the complete steel construction.

This guarantees an optimum corrosion protection and extends the durability of your skip loader.



4. **Storage Box:** In front of the loading bridge, a storage box is fitted as standard, even with the floor assembly and adapted to the vehicle. This provides an ideal use of space and storage capacity.

5. **OPTIONAL:** also with a lid or as a high storage box made of aluminum.

6. **OPTIONAL:** Premium storage boxes from „Gepro-BOX.

TYPICALLY GERGEN...

7. **SUPPORT FEET** SEPARATELY CONTROLLABLE AND HOT-DIP ZINC COATED. **OPTIONAL:** Rollers or pendulum plates and underlay plates in zinc coated plate holders.
8. **CYLINDER PRO-TECTION COVER AND LIGHTING SUPPORT** made of aluminium chequer plate.
9. **SEPARATELY CONTROLLABLE TELESCOPE ARMS** offer maximum flexibility even in the smallest of spaces. This allows you to place the container accurately without the need for annoying re-parking.



MANY USEFUL DETAILS FOR ACCURATE AND FAST WORK



11. **REINFORCED KEY PLATE** with hot-dip zinc coated deflectors with variable stop. These adapt effort easily to different container shapes. **Optional:** Tie-down rings for safely tying down the loads.
12. **THE HOT-DIP ZINC COATED, 4-FOLD HYDRAULIC CONTAINER LOCKING SYSTEM** enables the safe transport of containers of different sizes and waste compactors according to the latest specifications of the VDI-guidelines and without additional tensioning of the chains, by means of extended telescopes.



UNLIMITED POSSIBILITIES



1. **OPTIONAL:** Tilt-up device with limit. No matter whether the heaviest use is required or you want to go "high up" - we have the "tailor-made suit" for you in our skip loader!
2. Accessible and low-maintenance components.



...OPTIONAL

1. **Stable, HOT-DIP ZINC COATED HEADBOARD** with aluminium chequer plate planking. If necessary also with integrated working lights or painted in a RAL colour of choice.
2. **MUDGUARD** made of aluminium chequer plate.
3. The rounded, **LATERAL FULL PANNELLING** is individually adapted to each wheelbase and turns your vehicle into a business card.



THE GERGEN NAVIGATOR-CONTROLS

The GERGEN Navigator controls impress with their simple operation and create unrestricted mobility when operating the construction.

Changing requirements demand modern and innovative products...

WE ARE PREPARED FOR
THE FUTURE!

RADIO-NAVIGATOR-CONTROLS





Trough **UNRESTAINED INNOVATIVE POWER** numerous inventions for new products have been created, which make a skip loader from GERGEN unmistakable to this day.

The first generation of the telescopic skip loader with gooseneck design opened up a trend-setting development.

INNOVATIONS THAT PAY OFF!



GERGEN 
Kipper- und Fahrzeugbau

TAK OK ADONIS

The only skip loader with axially swivelling arms for comfortable container pick-up and an even better handling of the containers.



GERGEN 
Kipper- und Fahrzeugbau

OK = OHNE KETTEN (IN GERMAN) = WITHOUT CHAINS
ADVANTAGES AT A GLANCE:

ENORMOUS TIME SAVINGS - TIME IS MONEY:

No need to get out of the driver cab when setting down and picking up the containers.* Easy pick-up of wide or sloping containers when stacking or loading and unloading trailers. Simple, lateral correction when placing the containers. Reduction of accident risks.



*If there is a fixture on the container

GERGER 
Kipper- und Fahrzeugbau

GERGEN GWE EXCHANGE SYSTEM

The **EXCHANGE SYSTEMS** from GERGEN enable you to easily, quickly and safely change a wide variety of constructions such as skip loaders and hook lifts, concrete mixers, asphalt skips and much more.

- Flexibility and a better utilisation of your vehicles.
- Change of different constructions in a short time.
- Available as a hydraulically or mechanically operated version.





GERGEN 
Kipper- und Fahrzeugbau

ADONIS 6 AX

NO FEAR OF BIG TASKS

Perfectly suited for the use of containers according to DIN 30735 from 2,0 - 5,0 m³, according to DIN 30720 Part 1 up to 7,0 m³. We also offer you the advantages of our large skip loader series our small ones. The 10 m³ container can be transported depending on the wheelbase, but can only be tilted to a limited extent. (Minicontainer on request). **Extendable** from 1.740 mm to up to 2.040 mm inside width.



OUR SMALL TAK ADONIS



LIGHT AND QUICK - YOUR PROFIT!

STABILITY paired with **HIGH PAYLOAD.**

Designed for Multicar, right up to the small truck.



OUR LITTLE ONES ARE LOOKING FORWARD TO BEING USED AT:

- Disposers
- Construction companies
- Garden- and Landscape-Designers
- Roofing companies
- Municipal enterprises
- Craft enterprises

GERGEN 
Kipper- und Fahrzeugbau

GERGEN Kipper- und Fahrzeugbau GmbH

Geistkircher Strasse 14

D-66386 St. Ingbert
Germany

Phone: +49 (0) 6894 9203-0

Fax: +49 (0) 6894 9203-119

Mail: welcome@gergen-kipper.de

Web: www.gergen-kipper.de

Follow us:



GERGEN 
Kipper- und Fahrzeugbau